

# BELLA FIGURA

## Rille Lamp

**TL160**

Collection Name

**CANTERBURY COLLECTION**

Rille draws its name from the term first introduced by German astronomer, Johann Schröter, that describes the channels found scored into the moon's surface. The exaggerated furrows on this lamp allow the four new glazes to play on the surface and deliver an enchanting contrast between light and dark.

### Test Certification

IEC (International Electrotechnical Commission) test certificates available - will incur a surcharge  
UL (Underwriters Laboratories) test certificates available for the USA - will incur a surcharge  
Suitable for Yachts - Rod and bolting available for use on yachts



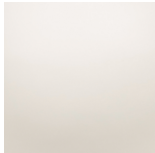
TL160 in Earl Grey and Old English Brass with 13" Tall Drum Shade in James Hare Vienne Silk Chalk 31458/01

### Available Finishes

#### Ceramic Finish



Ivy



Chalk

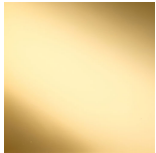


Jasper

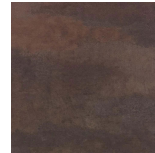


Earl Grey

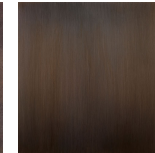
#### Metal Finish



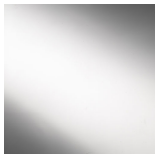
Polished Brass



Old English Brass



Bronze



Polished Nickel

#### Recommended Shade(s) (OPTIONAL)

13" Tall Drum

#### Silk Flex



Black



Brown



Cream



Silver

## Available Sizes

---

### One Size

TL160,

Height: 43 cm (16.93")

Diameter: 25.5 cm (10.04")

Bulbs: 1 x 40W E27

Net Weight: 3 kg / 7 lb Cable Exit:

Bottom

Dimensions are measured from the base of the lamp to the middle of the bulb holder and are excluding shade

Overall height with recommended 13" tall drum shade is 73cm

Shades are also available in Customer Own Material (COM)