

BELLA FIGURA

Sol Chandelier

CL804

Collection Name
VEGA COLLECTION

Humans have long illustrated the sun with a simplified image of a central circle surrounded by lines as rays which frame it. Sol, which takes its name from a sun god, plays on this universally recognised symbol for the Sun with arms that project out from a central point, each ending with a piece of hand-blown flared glass. A simple but joyful piece especially designed to suit those with low ceilings.

Compatible with



Bathroom



CL804-100 in Satin Glass and Antique Brushed Brass

Available Finishes

Glass Finish



Satin

Metal Finish



Antique

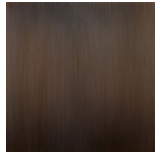
Brushed Brass



Brushed Gold



Brushed Nickel



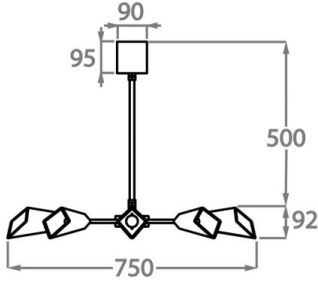
Bronze

Available Sizes

Size One

CL804-75,

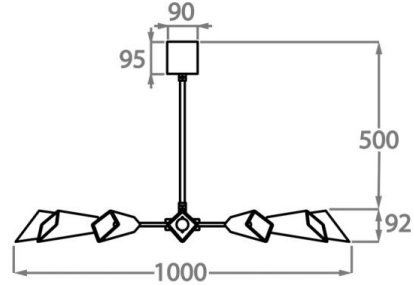
Height: 8.6 cm (3.39")
Diameter: 75 cm (29.53")
Bulbs: 9 x 2.5W G9 LED
Net Weight: 16 kg / 35 lb



Size Two

CL804-100,

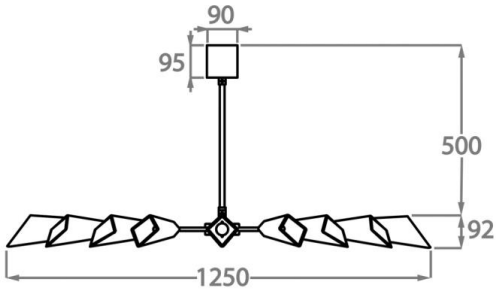
Height: 8.6 cm (3.39")
Diameter: 100 cm (39.37")
Bulbs: 12 x 2.5W G9 LED
Net Weight: 21 kg / 46 lb



Size Three

CL804-125,

Height: 8.6 cm (3.39")
Diameter: 125 cm (49.21")
Bulbs: 15 x 2.5W G9 LED
Net Weight: 27 kg / 60 lb



The dimensions of the central supporting rod and ceiling rose are not included in the height measurements.
The standard rod and ceiling rose is 50cm (20") high if not otherwise specified by the customer.
This design can be made in custom sizes.

Please Note: Our chandeliers are not supplied with ceiling hooks. The ceiling rose, chain and rod specification will differ dependent on the weight of the chandelier. A qualified electrician must assess your ceiling structure and advise on the right fitting.