

BELLA FIGURA

Mela Lamp

TL163

Collection Name
CONTOUR COLLECTION

The Mela table lamp, which takes its name from the Italian word for 'apple', is a rejuvenation of the traditional urn shape with six new finishes to adorn its voluptuous form. This creation is truly the apple of our eye.



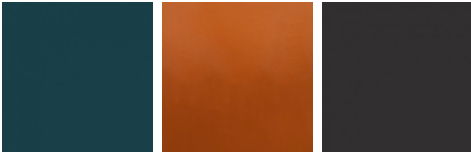
TL163 in Tabasco and Polished Brass with 16" Melton Shade in Bennett's Crepe Satin Dill 1806W/120

Available Finishes

Ceramic Finish



Parchment Mustard Admiral Blue

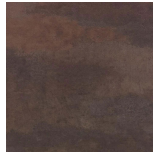


Dark Teal Tabasco Beluga

Neck and Bulb Holder



Bronze Polished Brass Polished Nickel



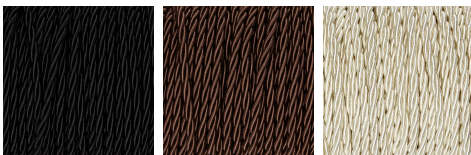
Old English Brass

Recommended Shade(s) (OPTIONAL)



16" Melton

Silk Flex



Black Brown Cream



Silver

Available Sizes

One Size

TL163,

Height: 48.5 cm (19.09")

Diameter: 26 cm (10.24")

Bulbs: 1 x 40W E27

Net Weight: 4 kg / 8.8 lb Cable

Exit: Bottom

Dimensions are measured from the base of the lamp to the middle of the bulb holder and are excluding shade

Overall height with recommended 16" melton shade is 71cm

Shades are also available in Customer Own Material (COM)