

# BELLA FIGURA

## Jupiter Mini Pendant

**CL808-SM**

Collection Name  
**VEGA COLLECTION**

Jupiter represents an authentic connection with the heavenly bodies which are granted the names of ancient deities and symbolize immense power and greatness. This showstopping alabaster pendant glows hypnotically in genuine likeness to the largest planet in our solar system, Jupiter. The options are endless with this series, we offer 2 standard sizes; both a generous open bottomed ceiling light which is truly spectacular and a dainty, miniature globe pendant which is enclosed at the base and can be styled as a single pendant or a cluster for big impact.

### Compatible with



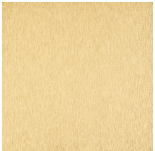
Bathroom



CL808-SM in Alabaster and Brushed Gold

### Available Finishes

#### Metal Finish



Brushed Gold



Brushed Nickel



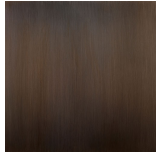
Polished Gold



Polished  
Nickel



Antique  
Brushed Brass



Bronze

#### Stone Finish

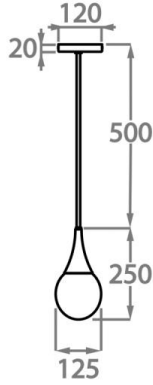


Alabaster

Available Sizes

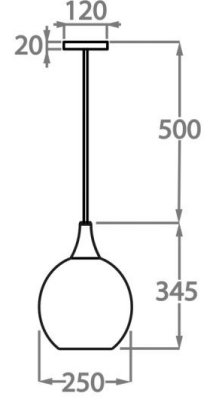
**Small**

CL808-SM,  
Height: 25 cm (9.84")  
Diameter: 14 cm (5.51")  
Bulbs: 1 x 2.5W G9 LED  
Net Weight: 3 kg / 6.6 lb



**Large**

CL808-LA,  
Height: 34.5 cm (13.58")  
Diameter: 25 cm (9.84")  
Bulbs: 1 x 25W E14  
Net Weight: 5 kg / 11 lb



**Cluster**

CL808-5,  
Height: 123 cm (48.43")  
Diameter: 41 cm (16.14")  
Bulbs: 5 x 2.5W G9 LED  
Net Weight: 12 kg / 26 lb

