

BELLA FIGURA

Jupiter Mini Cluster

CL808-5

Collection Name
VEGA COLLECTION

Jupiter represents an authentic connection with the heavenly bodies which are granted the names of ancient deities and symbolize immense power and greatness. This showstopping alabaster pendant glows hypnotically in genuine likeness to the largest planet in our solar system, Jupiter. The options are endless with this series, we offer 2 standard sizes; both a generous open bottomed ceiling light which is truly spectacular and a dainty, miniature globe pendant which is enclosed at the base and can be styled as a single pendant or a cluster for big impact.

Compatible with



Bathroom



CL808-5 in Alabaster & Antique Brushed Brass

Available Finishes

Metal Finish



Brushed Gold



Brushed Nickel



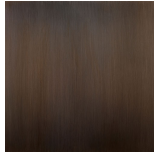
Polished Gold



Polished
Nickel



Antique
Brushed Brass



Bronze

Stone Finish

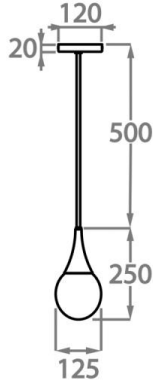


Alabaster

Available Sizes

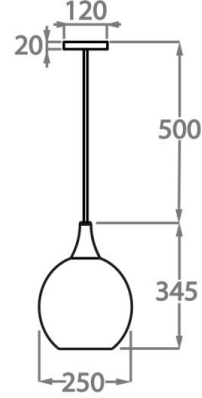
Small

CL808-SM,
Height: 25 cm (9.84")
Diameter: 14 cm (5.51")
Bulbs: 1 x 2.5W G9 LED
Net Weight: 3 kg / 6.6 lb



Large

CL808-LA,
Height: 34.5 cm (13.58")
Diameter: 25 cm (9.84")
Bulbs: 1 x 25W E14
Net Weight: 5 kg / 11 lb



Cluster

CL808-5,
Height: 123 cm (48.43")
Diameter: 41 cm (16.14")
Bulbs: 5 x 2.5W G9 LED
Net Weight: 12 kg / 26 lb

