

BELLA FIGURA

Ice Column Lamp

TL655

Collection Name
MODERN MURANO COLLECTION

A beautiful table lamp set on a double stepped brass base and made out of a solid hand-made column of Murano glass with a melting ice texture.

Required modifications for use on yachts - lacquer applied to all metal components with the cable exit through the bottom of the base.

Test Certification

IEC (International Electrotechnical Commission) test certificates available - will incur a surcharge
Suitable for Yachts - Rod and bolting available for use on yachts
UL (Underwriters Laboratories) test certificates available for the USA - will incur a surcharge

Compatible with



Yacht Club



TL655 in Clear and Brushed Gold with a 11" Tall Drum in a Romo Fabric ZI Z288/04 Silk Rock Slate

Available Finishes

Metal Finish



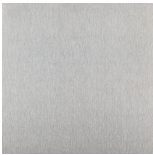
Polished Gold



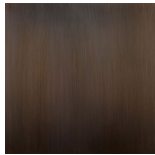
Polished Nickel



Brushed Gold



Brushed Nickel



Bronze

Murano Glass Finish



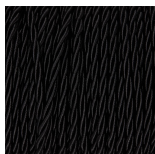
Clear

Recommended Shade(s) (OPTIONAL)

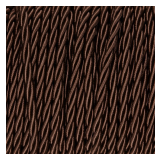


11" Tall Drum

Silk Flex



Black



Brown



Cream



Silver

Available Sizes

One Size Only

TL655,

Height: 60 cm (23.62")

Diameter: 13 cm (5.12")

Bulbs: 1 x 40W E27

Cable Exit: Bottom

Dimensions are measured from the base of the lamp to the middle of the bulb holder and are excluding shade.

Overall height with an 11" tall drum shade 89cm - 35" or with a 14" drum shade 96.5cm - 38"

Shades can also be made with Customer Own Material (COM)