

# BELLA FIGURA

## Herschel Chandelier

**CL805**

Collection Name  
**VEGA COLLECTION**

The Herschel series pays homage to British astronomer, Sir William Herschel who is credited with the discovery of Uranus and its two moons during his many studies of the heavens. This sleek triple pendant is beautifully complemented by its wall light counterpart; the parred back detailing of this series lets the effortless charm of the alabaster shades do all the talking.

### Compatible with



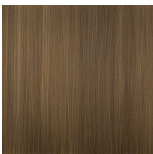
Bathroom



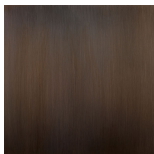
CL805 in Alabaster and Bronze

### Available Finishes

#### Metal Finish



Antique



Bronze



Brushed Gold



Alabaster

#### Stone Finish

Brushed Brass



Brushed Nickel

## Available Sizes

---

### Size One

CL805,

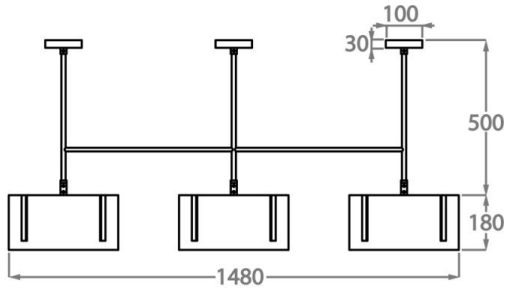
Height: 33 cm (12.99")

Width: 148 cm (58.27")

Depth: 19 cm (7.48")

Bulbs: 12 x 2.5W G9 LED

Net Weight: 28 kg / 62 lb



Please note that due to the nature of alabaster, some dark veins may be present in the stone.

The dimensions of the central supporting rod and ceiling rose are not included in the height measurements

The standard rod and ceiling rose is 50cm (20") high if not otherwise specified by the customer

Please Note: Our chandeliers are not supplied with ceiling hooks. The ceiling rose, chain and rod specification will differ dependent on the weight of the chandelier. A qualified electrician must assess your ceiling structure and advise on the right fitting.