

BELLA FIGURA

Halley Lamp

TL820

Collection Name
VEGA COLLECTION

The Halley table lamp is a stylised impression of the most famous comet to grace our skies, Halley's comet. This comet is a rare thing to behold but with a famous reputation for its everlasting presence. To honour 'Halley' honestly was to create a design that would stand the test of time, something that answers to both traditional and modern tastes in one and is in effect timeless.

Compatible with



Yacht Club



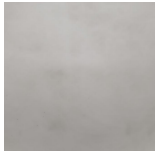
TL820 in Dolomite and Old English Brass with 14" Tall Drum Shade in Bennett's Dupion Silk Hint of Pink 5018W/50X

Available Finishes

Ceramic Finish



Chalk



Dolomite

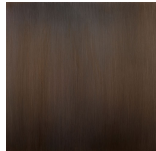


Oil

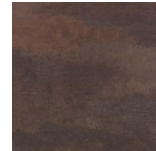


Crackle

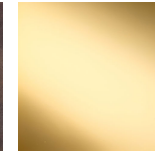
Neck and Bulb Holder



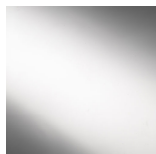
Bronze



Old English Brass



Polished Brass



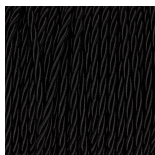
Polished Nickel

Recommended Shade(s) (OPTIONAL)



14" Tall Drum

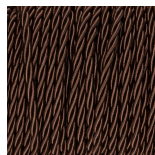
Silk Flex



Black



Cream



Brown



Silver

Available Sizes

Size One

TL820,

Height: 50.3 cm (19.8")

Width: 28 cm (11.02")

Depth: 28 cm (11.02")

Bulbs: 1 x 40W E27

Cable Exit: Bottom

Dimensions are measured from the base of the lamp to the middle of the bulb holder and are excluding shade.

Overall height with recommended 14" tall drum shade is 83.3cm - 32.8"