

# BELLA FIGURA

## Curzon Street Pendant

### CL121-PEN

Collection Name

**MAYFAIR COLLECTION**

Modelled on our iconic Curzon Street chandelier the new Curzon Street pendant is a welcome addition to the range. With its long, slender design this would look elegant and chic in any given interior. Available in either clear or frosted Lucite and a number of sizes.



CL121-PEN-12 in Clear Lucite and Brushed Gold

### Available Finishes

#### Lucite Finish



Clear Lucite  
Rods



Frosted Lucite  
Rods

#### Metal Finish



Brushed Gold



Brushed Nickel



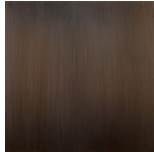
Polished Gold



Polished  
Nickel



Antique  
Brushed Brass



Bronze

## Available Sizes

---

### Size One

CL121-PEN-10,  
Height: 40 cm (15.75")  
Diameter: 10 cm (3.94")  
Bulbs: 1 x 40w E27  
Net Weight: 5 kg / 11 lb

### Size Two

CL121-PEN-12,  
Height: 40 cm (15.75")  
Diameter: 12.5 cm (4.92")  
Bulbs: 1 x 40w E27  
Net Weight: 5 kg / 11 lb

### Size Three

CL121-PEN-14,  
Height: 40 cm (15.75")  
Diameter: 14.5 cm (5.71")  
Bulbs: 1 x 40w E27  
Net Weight: 6 kg / 13 lb

### Size Four

CL121-PEN-16,  
Height: 40 cm (15.75")  
Diameter: 16.5 cm (6.5")  
Bulbs: 1 x 40w E27  
Net Weight: 8 kg / 18 lb

The dimensions of the supporting rod and ceiling rose are not included in the height measurements.

The standard rod and ceiling rose are 50cm (20") high from the top of the pendant, if not otherwise specified by the client.