

# BELLA FIGURA

## Crest Pendant

CL238E

Collection Name

**HALCYON COLLECTION**

Rolling waves tumble and break over the dome of these atmospheric glass pendants which feature a hot finished edge, preserving the molten fluidity of the glass. These temperate waves are the perfect antidote to the tumultuous storm captured within its table lamp counterpart: the calm before the storm.

### Compatible with



Express



CL238 in Clear Glass and Brushed Gold with Silver Flex

### Available Finishes

#### Glass Finish



Crest Bronze



Crest Ocean  
Blue



Crest Tea

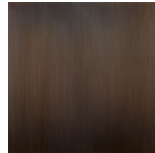


Crest Clear

#### Metal Finish



Brushed Dark  
Bronze



Bronze

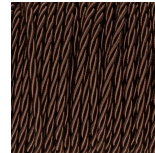


Brushed Gold



Brushed Nickel

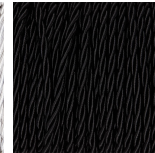
#### Silk Flex



Brown



Silver



Black



Cream

**Available Sizes**

---

**One size only**

CL238,

Height: 25.5 cm (10.04")

Diameter: 17.5 cm (6.89")

Bulbs: 1 x 40W E14

Net Weight: 3 kg / 7 lb

