

BELLA FIGURA

Concave Drum Pendant

CL412-PEN

Collection Name

RETRO MURANO COLLECTION

This contemporary ceiling light is a stunning re-imagining of a classical lantern. Whether you want to give a traditional room a modern re-styling or are looking for a unique pendant to become the perfect finishing touch to any space, this fixture can be worked seamlessly into a design. Now available in both smoke, satin and clear glass with a number of metal finishes, this drum pendant with a concave centre can be tailored to your preferences.

Test Certification

UL (Underwriters Laboratories) test certificates available for the USA - will incur a surcharge
IEC (International Electrotechnical Commission) test certificates available - will incur a surcharge



CL412-25 in Smoke Triangular Flat Cut Murano Glass and Polished Gold

Available Finishes

Metal Finish



Chrome

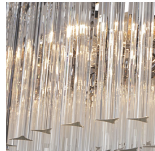


Brushed Dark
Bronze

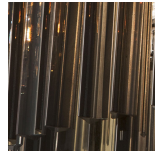


Polished Gold

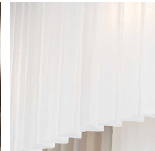
Murano Glass Finish



Clear Murano



Smoke
Murano



Satin Murano

Available Sizes

Size One

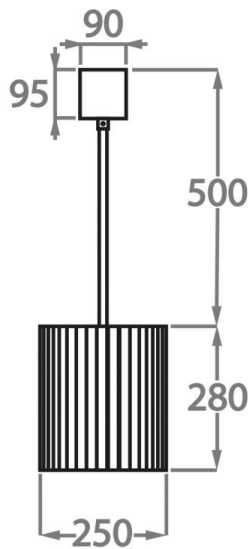
CL412-25,

Height: 28 cm (11.02")

Diameter: 25 cm (9.84")

Bulbs: 3 x 40w E27

Net Weight: 10 kg / 22 lb



The dimensions of the central rod/chain and ceiling rose are not included in the height measurements

The standard rod and ceiling rose is 50cm (20"), but this can be ordered in different sizes by the customer