

BELLA FIGURA

Brandt Lamp

TL209

Collection Name

MOONLIGHT COLLECTION

The Brandt series throws us back into the Art Deco era with a sleek and confident design inspired by one of the most accomplished metalsmiths of the time, Edgar Brandt. The sweeping lines of the original motif are made current by simplification, creating this impressive and highly adaptable design, which gleams as the light falls upon its surface. The table lamp and floor lamp in this series are made with a solid glass base, in your choice of a statement Gloss Black or soft, ethereal Satin which echoes the celestial look which runs throughout the Moonlight collection.

Required modifications for use on yachts - lacquer applied to all metal components with the cable exit through bottom of the base.

Compatible with



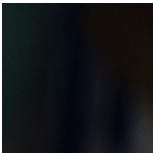
Yacht Club



TL209 in Brushed Dark Bronze with a 12" Oval 38000/136 Manta Ray

Available Finishes

Lamp Base Finish



Gloss Black



Satin Clear

Metal Finish



Brushed Dark Bronze



Brushed Gold



Brushed Nickel

Recommended Shade(s) (OPTIONAL)

12" Oval

Available Sizes

One Size Only

TL209,

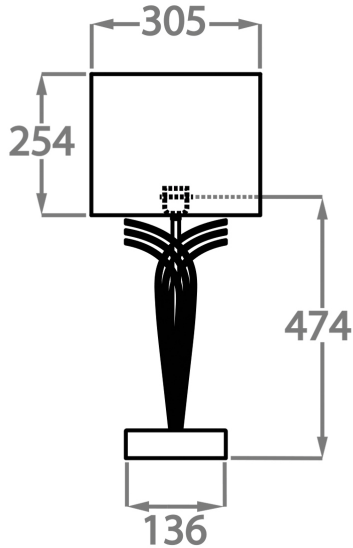
Height: 47.4 cm (18.66")

Width: 13.6 cm (5.35")

Depth: 12 cm (4.72")

Bulbs: 1 E27

Cable Exit: Bottom



Dimensions are measured from the base of the lamp to the middle of the bulb holder and are excluding shade.

Overall height with a 12" oval shade 69CM

Shades are also available in Customer Own Material (COM)