

# BELLA FIGURA

## Bijou Large Lamp

TL661-LA

Collection Name

**CONTOUR COLLECTION**

An uncomplicated jewel of utmost sophistication, which will place itself effortlessly within a vast array of settings. The Bijou lamp is a fusion of English blown glass and Italian gilding to create this versatile and feminine gem of distinction, now available in a statuesque larger size

Required modifications for use on yachts - lacquer applied to all metal components, "sea rod" through centre to secure base to surfaces, with the cable exit through bottom of the base.

### Compatible with



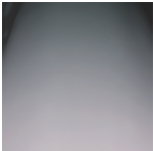
Yacht Club



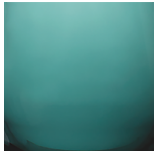
TL661 in Steel Blue and Brushed Nickel with 12" Tall Drum Shade in Silk Linen 3998/Natural N

### Available Finishes

#### Glass Finish



Wolf Grey



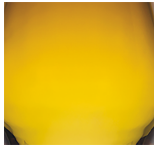
Teal



Heliotrope



Steel Blue



Amber

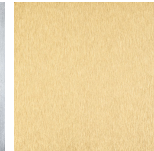
#### Metal Finish



Gold Leaf



Silver Leaf



Brushed Gold



Brushed Nickel

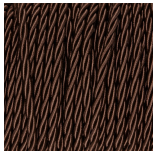
#### Recommended Shade(s) (OPTIONAL)

12" Tall Drum

#### Silk Flex



Black



Brown



Cream



Silver

## Available Sizes

---

### Small

TL661-SM,  
Height: 31 cm (12.2")  
Diameter: 16.5 cm (6.5")  
Bulbs: 1 x 40W E27  
Cable Exit: Top

### Large

TL661-LA,  
Height: 48 cm (18.9")  
Diameter: 18.5 cm (7.28")  
Bulbs: 1 x 40W E27  
Cable Exit: Top

TL661-SM: Overall height with a 10" Tall Drum Shade 63cm - 24.8inch

TL661-LA: Overall height with a 12" Tall Drum Shade 75cm - 30"