

# BELLA FIGURA

## Athena Lamp

TL823

Collection Name  
**VEGA COLLECTION**

An ode to the deity, Athena, a goddess of wisdom and craft. This contemporary model is styled on the traditional form of a Greek amphora with exaggerated, angular arms in stark contrast to its rounded body. Athena is an adaptable statement piece which possesses the ability to claim focus or quietly set the tone of its setting depending upon the selection of finishes.

### Compatible with



Yacht Club



TL823 in Tabasco and Polished Brass with 12" Tall Drum Shade in James Hare Vienne Silk Chalk 31458/01

### Available Finishes

#### Ceramic Finish



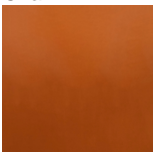
Chalk



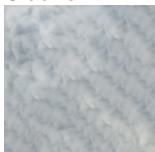
Crackle



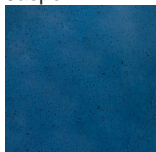
Jasper



Tabasco

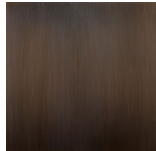


Dapple Grey

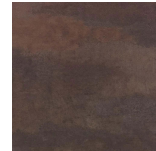


Starry Sky

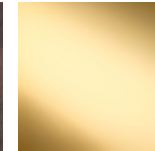
#### Neck and Bulb Holder



Bronze



Old English Brass



Polished Brass

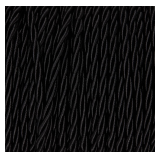


Polished Nickel

#### Recommended Shade(s) (OPTIONAL)

12" Tall Drum

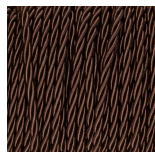
#### Silk Flex



Black



Cream



Brown



Silver

Available Sizes

---

**Size One**

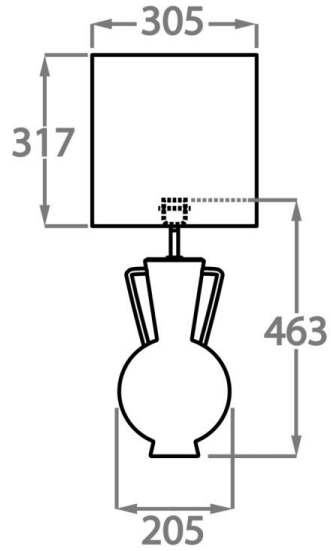
TL823,

Height: 46.3 cm (18.23")

Diameter: 20.5 cm (8.07")

Bulbs: 1 x 40W E27

Cable Exit: Bottom



Dimensions are measured from the base of the lamp to the middle of the bulb holder and are excluding shade.  
Overall height with recommended 12" tall drum shade is 74.2cm - 29.2"