

BELLA FIGURA

Atacama Lamp

TL234

Collection Name

HALCYON COLLECTION

Atacama, Chile, is one of the driest areas in the world and within this remote desert lies beauty of ethereal quality. An extra-terrestrial landscape of pink birds and imposing, eerie pockets of water bubbling and jets of steam bursting into the sky. Most unusual of all is the vast white jigsaw spanning as far as the eye can see, the salt flats of Atacama. Our new design of the same name retraces the natural pattern scored through this salt mosaic in a delightful array of glass colours.

Compatible with



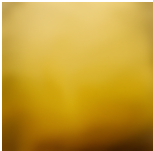
Yacht Club



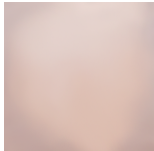
TL234 in Clear and Brushed Gold with a 15" Oval Shade in Crepe Satin 1806W-012 Frosted Almond

Available Finishes

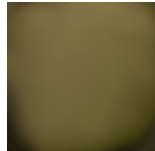
Glass Finish



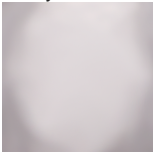
Halcyon Amber



Halcyon Blush Pink



Halcyon Bronze



Halcyon Clear



Halcyon Ocean Blue

Neck and Bulb Holder



Brushed Nickel

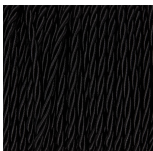


Brushed Brass

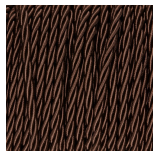
Recommended Shade(s) (OPTIONAL)

15" Oval

Silk Flex



Black



Brown



Cream



Silver

Available Sizes

One Size Only

TL234,

Height: 27.5 cm (10.83")

Width: 27 cm (10.63")

Depth: 22 cm (8.66")

Bulbs: 1 x 40W E27

Net Weight: 4 kg / 9 lb Cable Exit:

Bottom

Dimensions are measured from the base of the lamp to the middle of the bulb holder and are excluding shade

The overall height with a 15" oval drum shade is 48cm - 19"

Finish note: As these glass lamps are handmade by our artisans in England, they may vary slightly from piece to piece in dimension and appearance