

# BELLA FIGURA

## Aster Lamp

TL821

Collection Name  
**VEGA COLLECTION**

Aster simply aims to encapsulate the raw purity of an asteroid, small and mighty. Done so in a stylistic approach which, replaces rocky textures with whirling folds, this smart and petite character is refined and easy to set down in your interior setting. Aster's smaller size and soft form makes it perfect for bedside areas and tighter spaces.

Required modifications for use on yachts - lacquer applied to all metal components, "sea rod" through centre to secure base to surfaces, with the cable exit through bottom of the base.

### Compatible with



Yacht Club



TL821 in Chalk and Bronze with 10" Tall Drum Shade in James Hare Vyne Silk Ivory 31625/01

### Available Finishes

#### Ceramic Finish

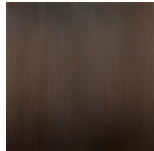


Chalk

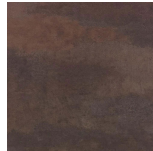


Jasper

#### Neck and Bulb Holder



Bronze



Old English  
Brass



Polished Brass



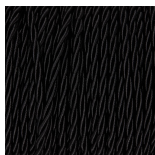
Polished Nickel

#### Recommended Shade(s) (OPTIONAL)



10" Tall Drum

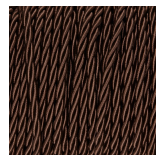
#### Silk Flex



Black



Cream



Brown



Silver

## Available Sizes

---

### Size One

TL821,

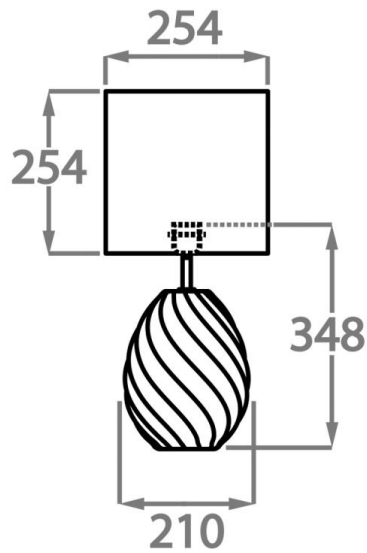
Height: 34.8 cm (13.7")

Width: 21 cm (8.27")

Depth: 21 cm (8.27")

Bulbs: 1 x 40W E27

Cable Exit: Bottom



Dimensions are measured from the base of the lamp to the middle of the bulb holder and are excluding shade.

Overall height with recommended 10" tall drum shade is 56.4cm - 22.2"